

# Sigrist Pipe Chase Housing

The **ORIGINAL** “drop-in” solution for consolidating roof penetrations

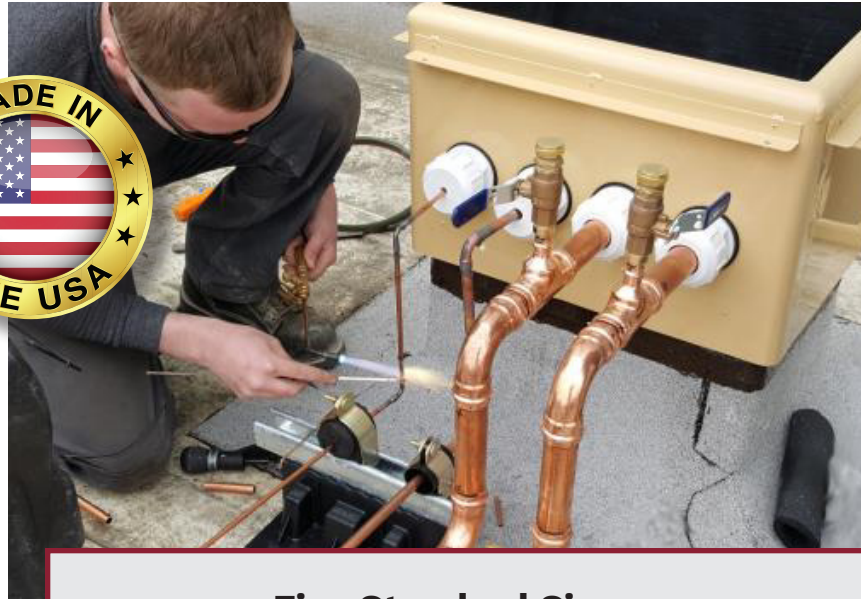
**20 Year Warranty**

**ALTA**  
PRODUCTS LLC  
Innovation That Works.™



Photo above shows the size Medium Pipe Chase Housing atop a 14” tall curb with 16 Sigrist Exit Seals® installed.

Photo to the right shows a size Small during installation.



## Features:

- .080” Thick aluminum housing and curb for sizes Small and Medium Housings and Curbs
- .125” Thick aluminum used for sizes: Medium Double-Long, Large and Data Center Housings and Curbs
- UV protected powder coated finish (2mil thick)
- Stainless steel fasteners
- **Full Thermal Break in the housing and curb and lid interior**
- Gaskets between the lid to housing and housing to curb connection points



X-Long Regular

Also shown in the above images are Sigrist Exit Seals® (ASTM E-283 Air Barrier Approved)

- Available in two lengths and 11 line/pipe sizes (1/4” up to 1 5/8”) for walls up to 8.5” thick
- Injection molded ABS resin that is impact resistant and UV protected
- Limited lifetime warranty

## Five Standard Sizes

### SMALL

Designed for small AC condensing units - Accommodates up to 7 Sigrist Exit Seals®

**Housing:** 16.5” x 10” x 12.5” tall

**Curb options:** 14”, 18” and 24” tall

### MEDIUM

Sized to facilitate up to 4 split systems (up to 16 Sigrist Exit Seals® can be installed)

**Housing:** 20.5” x 14.5” x 13.5” tall

**Curb options:** 14”, 18” and 24” tall

### MEDIUM Double-Long

Sized to facilitate up to 8 split systems (up to 32 Sigrist Exit Seals® can be installed)

**Housing:** 38” x 14.5” x 13.5” tall

**Curb options:** 14”, 18” and 24” tall

### LARGE

**Housing:** 34” x 34” x 24” tall

**Curb options:** 14”, 18” and 24” tall

### DATA CENTER

**Housing:** 18” x 60” x 24” tall

**Curb options:** 14”, 18” and 24” tall